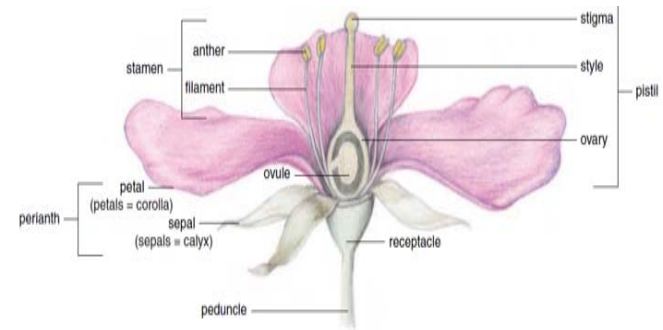


# ANGIOSPERMS

FLOWER – STRUCTURE - LIFECYCLE  
Asst. Prof. Renosh Tom Varghese K.  
Dept. of Botany, Mar Thoma College, Thiruvalla  
For B.Sc. Botany Programme

## PARTS OF FLOWER



1

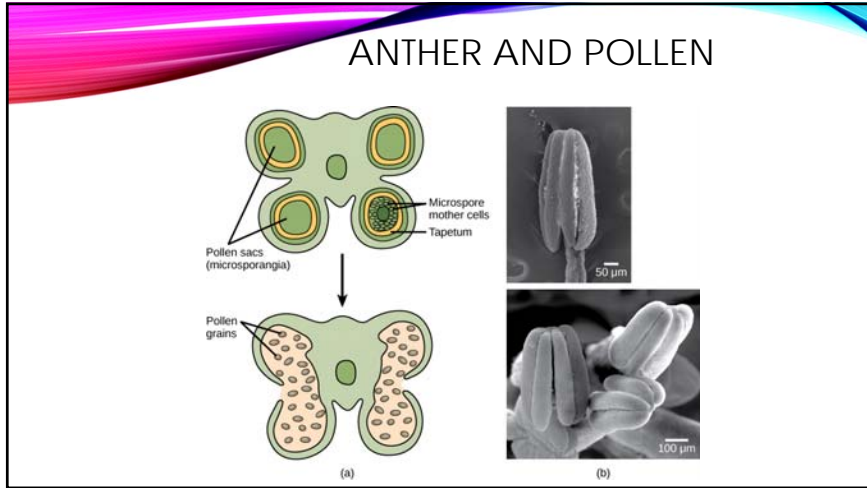
3

## UNDERSTANDING FLOWER

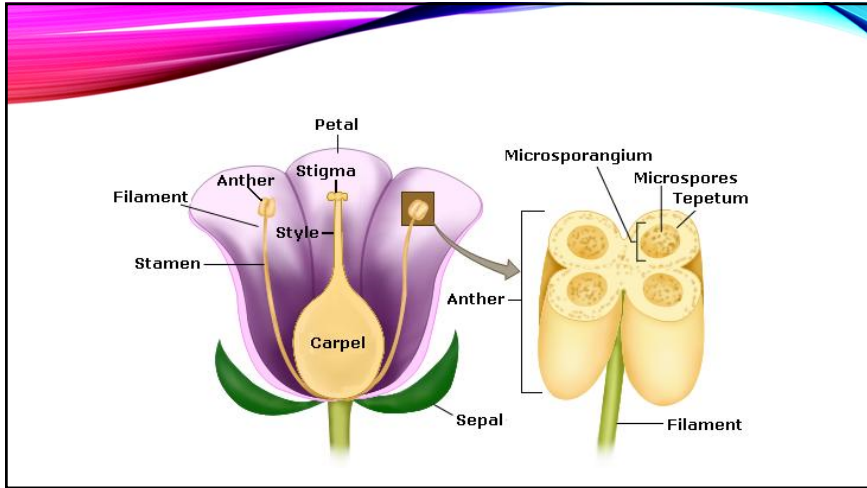
## STRUCTURE AND EVOLUTION OF ANTHER

2

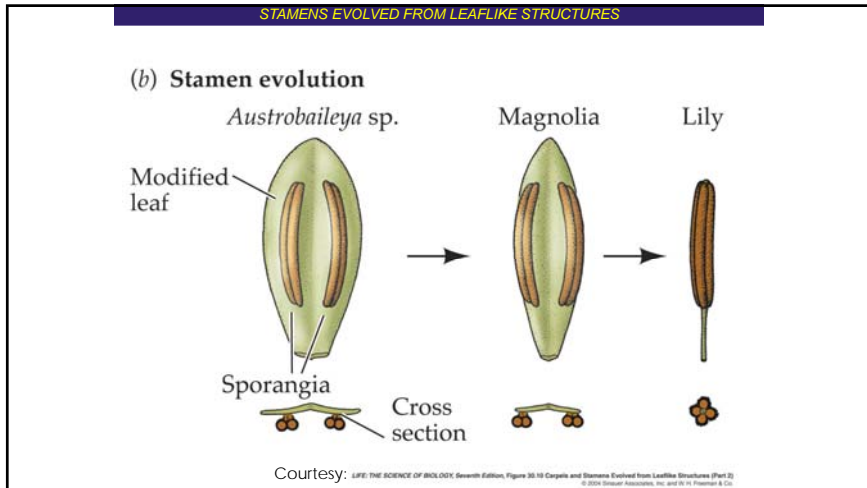
4



5



7

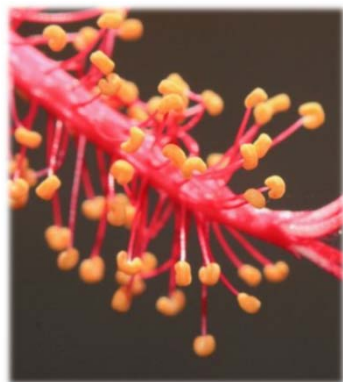


6



8

MONOTHECOUS  
ANTHER

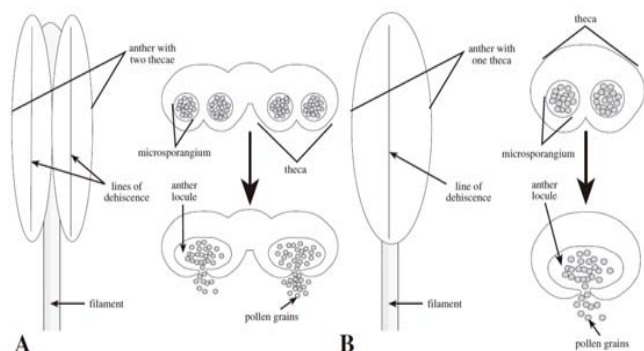


9

OVULE STRUCTURE

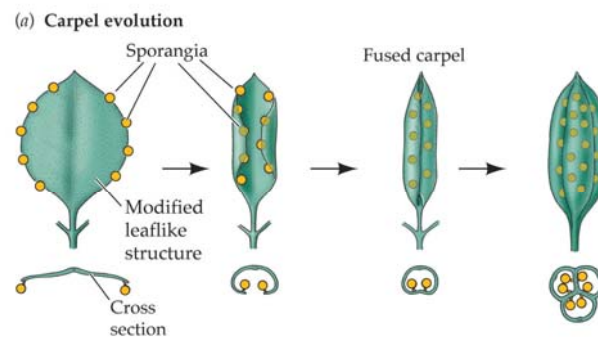
11

ANTHER TYPES IN THE ANGIOSPERMS  
A. DITHECAL. B. MONOTHECAL.



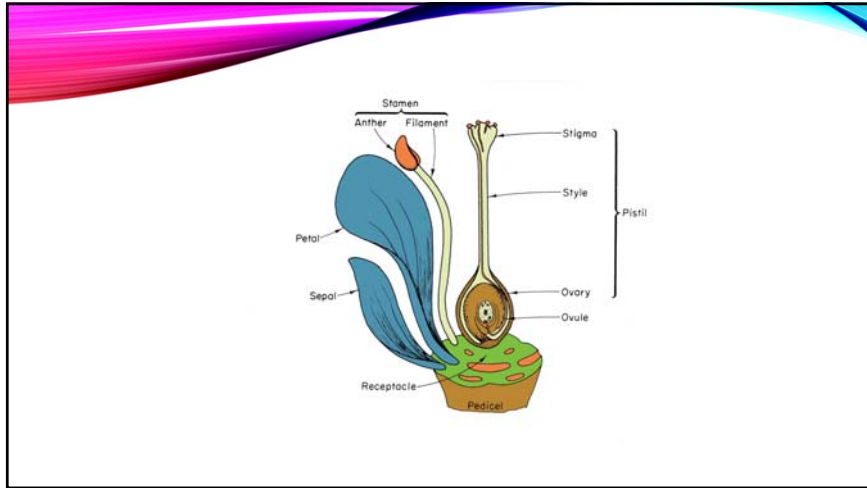
10

CARPELS EVOLVED FROM LEAF LIKE STRUCTURES

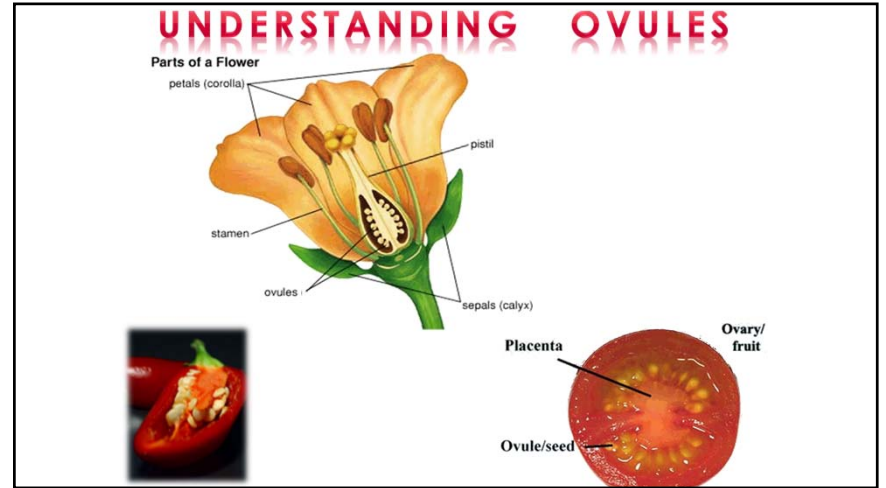


Courtesy: LIFE: THE SCIENCE OF BIOLOGY, Seventh Edition, Figure 35.10 Carpels and Stamens Evolved from Leaflike Structures (Part 1)  
© 2004 Sinauer Associates, Inc. and W. H. Freeman & Co.

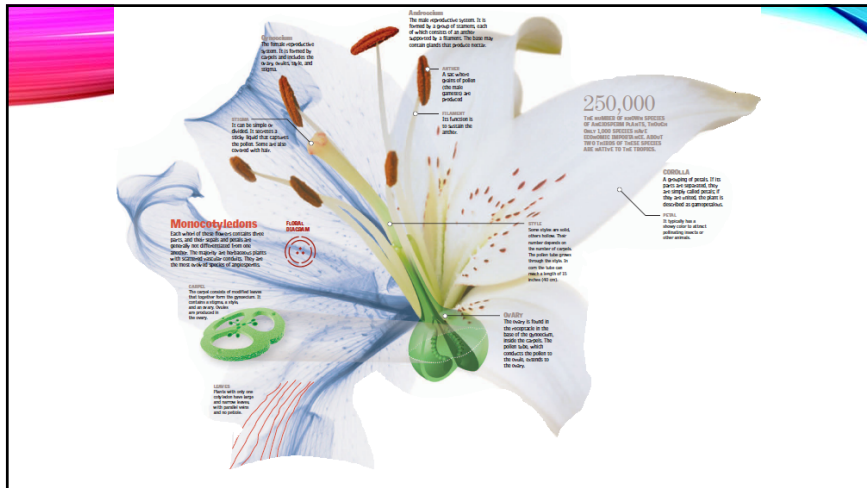
12



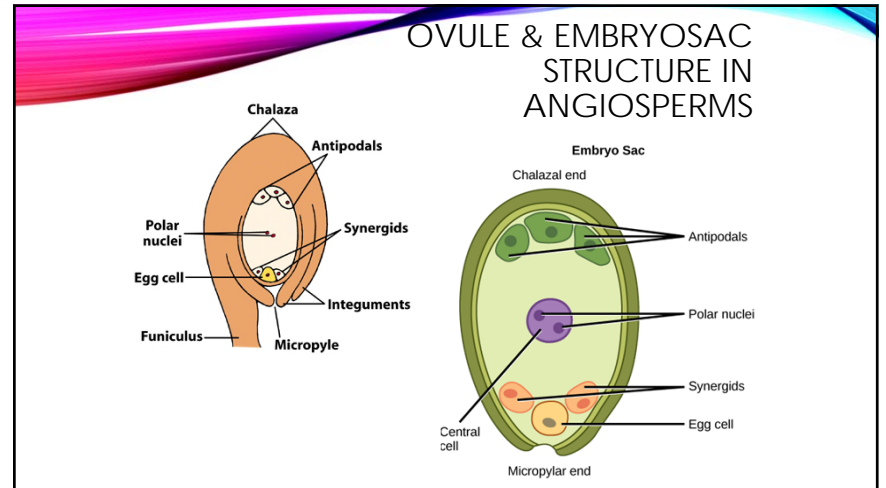
13



15

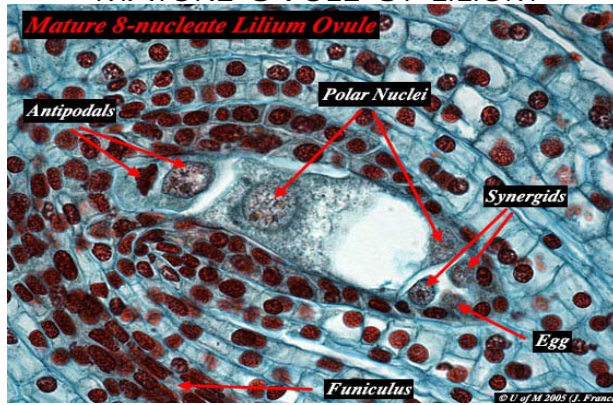


14



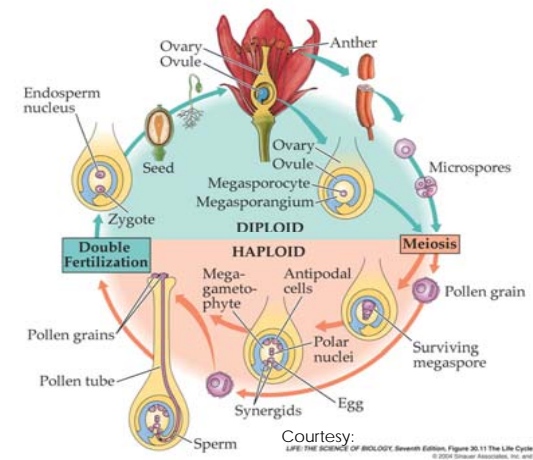
16

## LONGITUDINAL SECTION OF THE MATURE OVULE OF *LILIAM*



17

## THE LIFE CYCLE OF AN ANGIOSPERM PLANT

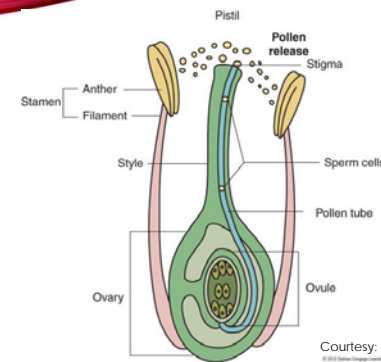


19



## LIFE CYCLE OF ANGIOSPERMS

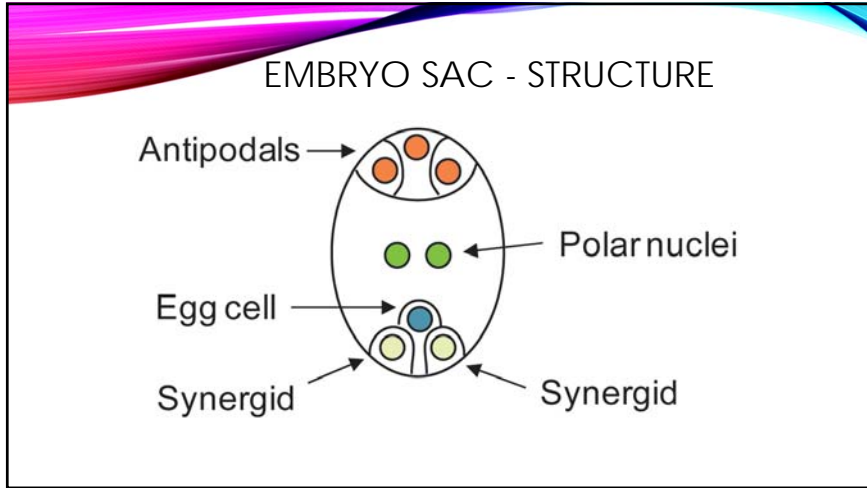
18



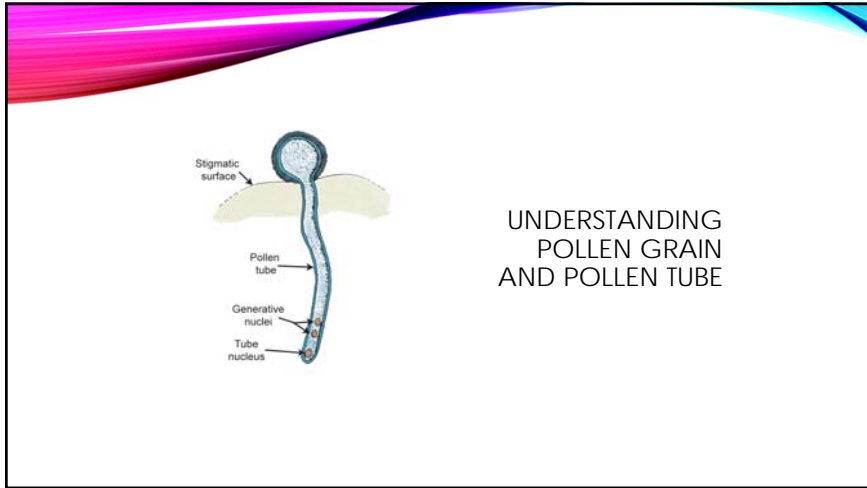
## POLLINATION

20

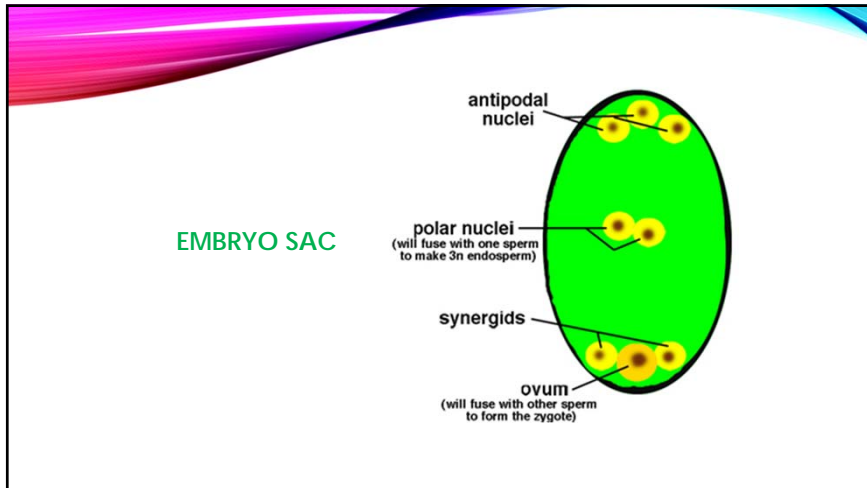




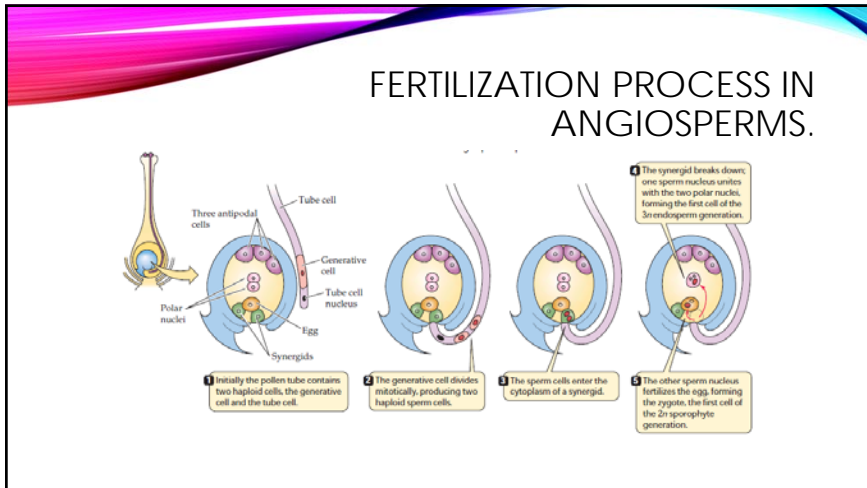
21



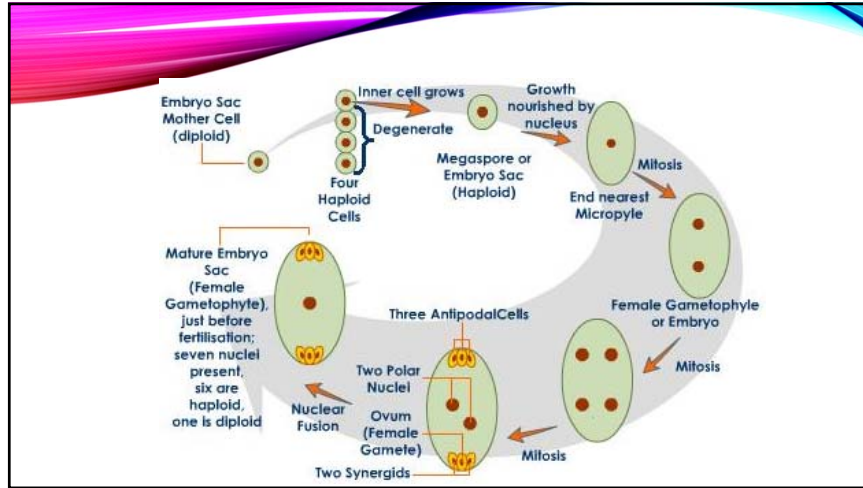
23



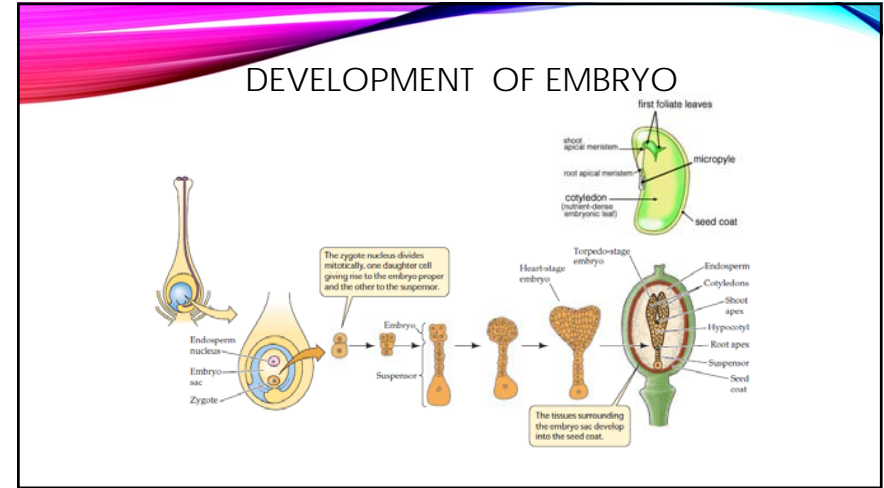
22



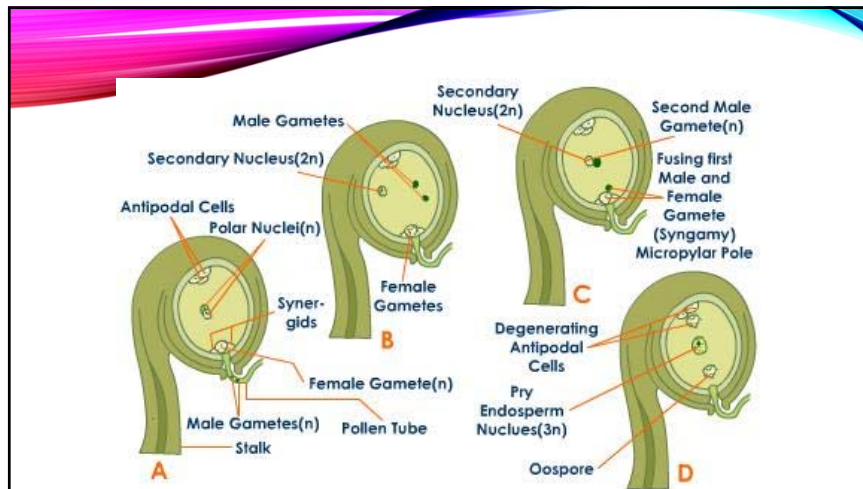
24



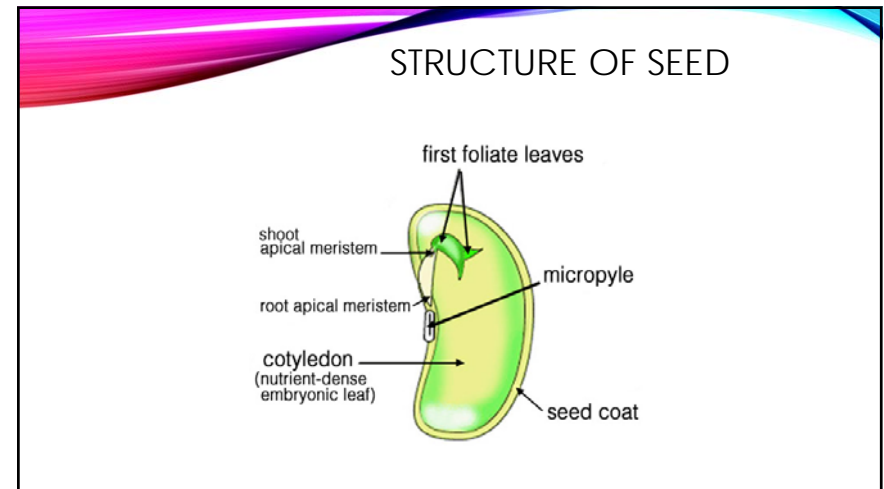
25



27



26

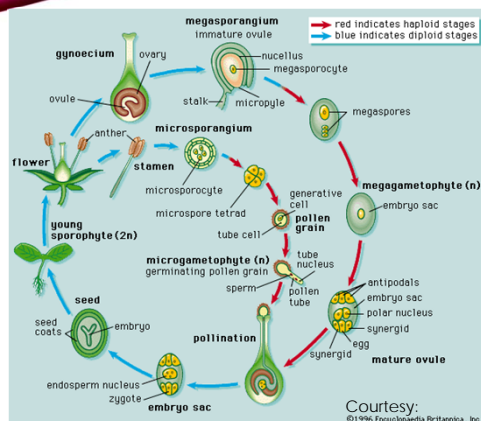


28

# LIFE CYCLE OF ANGIOSPERM (SUMMARY)

29

# LIFE CYCLE OF ANGIOSPERMS



30